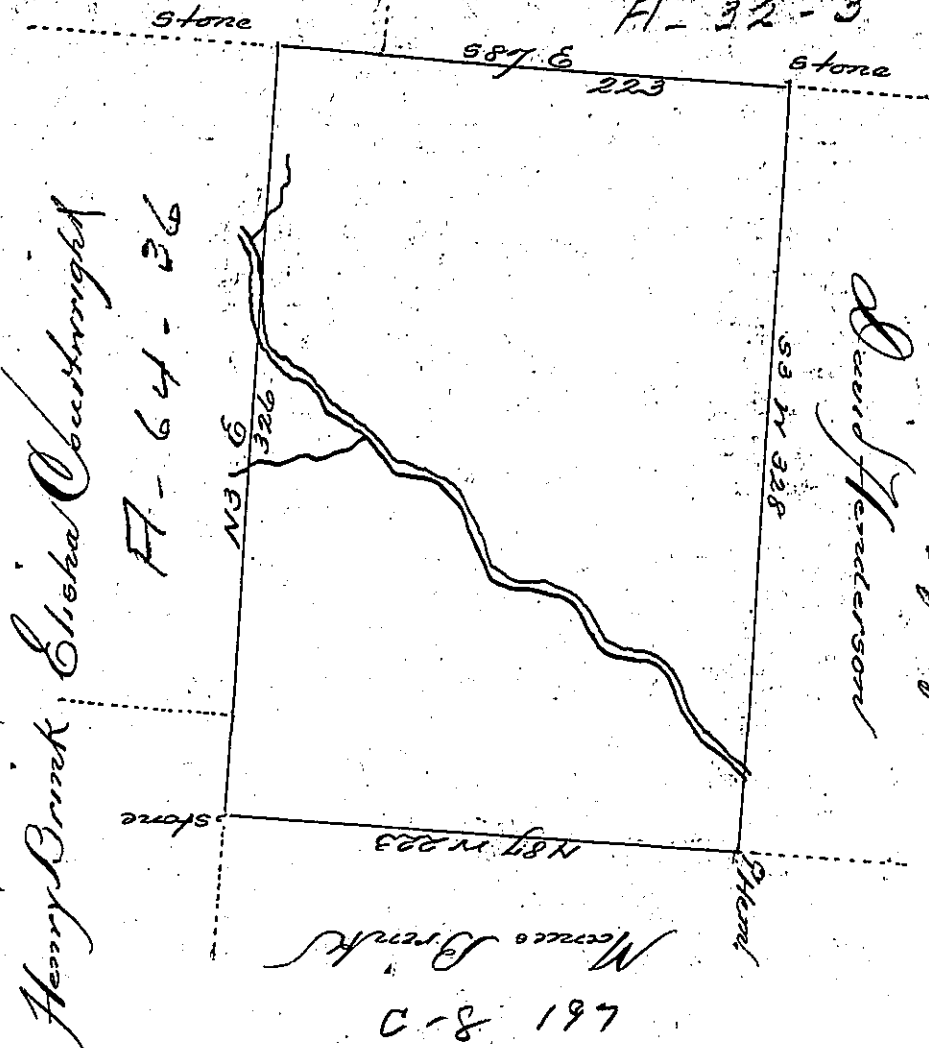


Sharp Delaney
A-64-37

Robert Craig
A-32-3



By Virtue of a warrant dated the 1st July 1784. Surveyed the 16 October 1786.
 to John Craig the above described tract of land situated above Shoekha
 and branch of Shrawders Creek in the County of Northampton County
 containing four hundred and twenty eight acres one hundred and three
 perches and the allowance of six sq. Cent. &c.

P. Geo. Palmer.

Daniel Brodhead Esquire
 Survey General

IN TESTIMONY that the above is a copy of the original remaining on file in
 the Department of Internal Affairs of Pennsylvania, made
 conformably to an Act of Assembly approved the 16th day of
 February, 1833, I have hereunto set my Hand and caused
 the Seal of said Department to be affixed at Harrisburg,
 this 1st day of March 1904

James B. Brown
 Secretary of Internal Affairs.